

Bus Passenger News

Bus Passenger News provides information on forthcoming local bus service changes in Essex. A summary of each change is provided below. If you would like further information about a particular service, contact your Transport Provider – contact details are available from www.TravelEssex.co.uk.

TravelEssex has agreed common registration dates for new registrations, variations, and cancellations. At the time of publication, the next change date is

Sunday 04 January 2026

Service	Route & Operator	Summary of Changes	Start Date
1 (Southend)	Rayleigh – Southend <i>Arriva</i>	Revised timetable. Frequency reduced on Monday to Friday and Saturdays.	04/01/26
2-3	Harlow Town Railway Station – Circular via Staple Tye <i>Central Connect</i>	Revised timetable. Additional Service 2 journey from Harlow Train Station at 2310 Monday to Friday.	05/01/26
2-2A (Southend)	Shoeburyness – Southend Travel Centre <i>Arriva</i>	Revised timetable to improve punctuality.	04/01/26
3	Shotgate – Billericay, Mayflower School <i>NIBS Buses</i>	Revised timetable to improve service reliability.	05/01/26
4	Harlow Town Station or Bus Station – Circular via Latton Bush <i>Central Connect</i>	Revised Sunday timetable. Enhanced timetable from a 2 hourly frequency to hourly and every other journey will depart from Harlow Train Station.	11/01/26
7	Saffron Walden – Cambridge <i>Stagecoach in Cambridge</i>	Revised timetable. Adjustments to the 15:03 afternoon trip from Pampisford. Extra morning journey from Sawston at 0822. Timing adjustments to some other journeys.	04/01/26
7-8	Landwick or Shoeburyness – Rayleigh <i>Arriva</i>	Revised route and timetable. Route extended to Landwick to cover for withdrawal of Service 9A from that location (see entry below). Reduction in frequency and earlier finish on Sundays.	04/01/26

Service	Route & Operator	Summary of Changes	Start Date
9 (Southend)	Shoeburyness – Rayleigh <i>Arriva</i>	Revised timetable operating approximately every 20 minutes. Route 9A journeys withdrawn. Journeys towards Landwick are covered by revised service 7-8 (see entry above).	04/01/26
13-13A-13B-13C-14	Ongar, North Weald, Upshire – Waltham Cross <i>Central Connect</i>	Revised timetable. Changes made to improve punctuality. Some weekday evening journeys have been removed, and additional Saturday short journeys have been added.	05/01/26
15-15A-15B	Waltham Cross – Harlow (15, 15A) and Upshire (15B) <i>Central Connect</i>	Revised timetable. Monday to Saturday additional evening services.	05/01/26
16-16C	Waltham Cross Circular – Waltham Abbey (16) or Loughton (16C) <i>Central Connect</i>	Revised timetable. Additional evening journeys Monday to Saturday and morning and late evening changes to departure times.	05/01/26
17-18	Chelmsford – Great Dunmow <i>JW Lodge & Sons</i>	Revised timetable. The services will now operate via Chignall Smealy and Chignall St James four days a week. The afternoon journey towards Dunmow will depart half an hour later at 1330 from Chelmsford Retail Market.	02/12/25
19-19A	Chelmsford – Harlow <i>First Essex Buses</i>	Revised timetable. Service 19A will now depart Harlow at 2345 on Sundays.	04/01/26
20-20S	Hullbridge – Southend Travel Centre <i>First Essex Buses</i>	Introduction of school variant labelled as 20S which will operate via Westcliff High Schools to relieve pressure on Service 825.	04/01/26
20-21-22-22B	Ongar (20) or Epping (21, 22, 22B) – Harlow <i>Central Connect</i>	Adjustments to peak time journeys. Additional short journey on route 21 (Saturday morning). 2245 Monday to Saturday Service 22B journey now extended to Epping and renumbered as Service 20.	05/01/26
22	Canvey – Basildon <i>First Essex Buses</i>	Minor changes to timetable.	04/01/26
24	Harlow Bus Station – Circular via River Way <i>Central Connect</i>	Revised timetable. Additional journeys Monday to Saturday.	05/01/26
26-26A	Harlow Bus Station – Circular via Little Parndon <i>Central Connect</i>	Additional Monday to Friday journey introduced at 1950.	05/01/26

Service	Route & Operator	Summary of Changes	Start Date
27	Harlow, The Stow – Harlow, Enterprise Park <i>Central Connect</i>	New service from Harlow, The Stow to Harlow, Enterprise Park Monday to Friday.	05/01/26
27-27A-827	Canvey – Southend <i>First Essex Buses</i>	Minor changes to timetable.	04/01/26
28	Basildon – Southend <i>First Essex Buses</i>	Minor changes to timetable.	04/01/26
31-331-332-333	Maldon, Heybridge, Steeple, Burnham – Chelmsford <i>First Essex Buses</i>	Timing point change in Woodham Mortimer. Revised timetable incorporating minor changes to running times.	04/01/26
32	Broxbourne Station – Harlow Bus Station <i>Central Connect</i>	New service from Broxbourne to Harlow operating Monday to Friday.	05/01/26
43-44-45-46-50	Shotgate – Billericay Schools <i>NIBS Buses</i>	Revised timetable on all routes to improve service reliability.	05/01/26
51	Highwoods Tesco – Wivenhoe <i>First Essex Buses</i>	Minor changes to timetable.	04/01/26
52	Stanway – Highwoods Tesco <i>First Essex Buses</i>	Minor changes to timetable.	04/01/26
54	Greenstead – Colchester City Centre <i>First Essex Buses</i>	Minor changes to timetable.	04/01/26
59 (Sunday)	Chelmsford – Harlow <i>First Essex Buses</i>	Revised timetable. Sundays only, enhanced timetable from a 2 hourly frequency to hourly.	04/01/26
60	Bishops Hall Estate – Warley circular <i>Central Connect</i>	Revised timetable including changes to peak time timetable and additional journeys introduced on weekdays across part of the route.	05/01/26
70-170	Marks Farm – Chelmsford <i>First Essex Buses</i>	Timing point change in Chelmsford Broomfield Road. Revised timetable incorporating minor changes to running times. 1705 schooldays 170 journey from Braintree Bus Interchange to Chelmsford now begins at 1653 from Marks Farm Tesco.	04/01/26
71-371-372-X71	Chelmsford – Colchester <i>First Essex Buses</i>	Service 71 journeys currently starting at Freebournes Road in Witham will now start from The Avenue instead.	04/01/26
102-104	Harwich – Colchester <i>First Essex Buses</i>	Minor changes to timetable.	04/01/26
200	Basildon – Grays <i>First Essex Buses</i>	Revised running times through Tilbury.	04/01/26
288	Maldon Tesco – Maldon Tesco <i>Stephensons</i>	The 1800 journey from Maldon Tesco to Blackwater Leisure Centre will no longer operate.	05/01/26

Service	Route & Operator	Summary of Changes	Start Date
331	Braintree – Great Dunmow – Helena Romanes School <i>Central Connect</i>	Revised route and timetable. The service will now depart Braintree at 0740. Journeys extending to within the school grounds.	05/01/26
333	Braintree Bus Station – Stansted Airport <i>Central Connect</i>	Revised route and timetable. Journeys to school now extended on to the school grounds.	05/01/26
336	South Woodham – Chelmsford <i>First Essex Buses</i>	Timing point change in Danbury for journeys towards South Woodham Ferrers. Revised timetable incorporating minor changes to running times.	04/01/26
407	Old Harlow – Princess Alexandra Hospital <i>Central Connect</i>	New Sunday service with an hourly frequency.	11/01/26
431	Blackmore – Shenfield High School <i>NIBS Buses</i>	Revised timetable to improve service reliability.	05/01/26
434	Shenfield – Ongar <i>NIBS Buses</i>	Timetable change for morning journey to improve reliability.	05/01/26
475	Stanford-le-Hope – Brentwood <i>NIBS Buses</i>	Revised timetable to improve service reliability.	05/01/26
481	West Horndon – Hutton, St Martins School <i>NIBS Buses</i>	Revised timetable to improve service reliability.	05/01/26
513	Witham – Southend High School for Girls <i>Stephensons</i>	Revised timetable to improve service reliability.	05/01/26
702	Frinton-on-Sea – Colchester, Norman Way School <i>Stephensons</i>	Service withdrawn.	05/01/26
826	Castle Hedingham – Colchester Royal Grammar School <i>Flagfinders</i>	Service withdrawn.	31/12/25
B1	Laindon – Basildon <i>First Essex Buses</i>	Revised running times to improve punctuality.	04/01/26
B5	Gardiners Lane South – Basildon <i>First Essex Buses</i>	Revised running times to improve punctuality.	04/01/26
C1	Galleywood – Broomfield Hospital <i>First Essex Buses</i>	Timing point change in Chelmsford, Broomfield Road. Revised timetable incorporating minor changes to running times.	04/01/26
C1-C7-C9	Wivenhoe, Alresford, Gt. Bentley – Brightlingsea <i>Stephensons</i>	This schoolday service will be open to the general public from January 2026. Revised timetables and withdrawal of C8 variant.	05/01/26

Service	Route & Operator	Summary of Changes	Start Date
C3	Point Clear – Brightlingsea <i>Stephensons</i>	Revised route and timetable. Route diverted to now serve Aingers Green.	05/01/26
C4	Frating – Brightlingsea <i>Stephensons</i>	This schoolday service will be open to the general public from January 2026. Revised route and timetable.	05/01/26
C7-57	Galleywood – Chelmsford Rail Station <i>First Essex Buses</i>	Minor timetable change. A minute adjustment on some AM and PM journeys at Meadgate Shops towards Bus Station.	04/01/26
X1 (Boxing Day Only)	Southend Travel Centre – Lakeside Bus Station <i>Ensignbus</i>	Boxing Day only service. Revised timetable. Hourly service between 0745-1745 from Southend.	26/12/25
X2 (Boxing Day Only)	Southend Travel Centre – Upminster Station <i>Ensignbus</i>	Boxing Day only service. Revised timetable including a 30 minute frequency between Upminster and Basildon. One bus per hour continues beyond Basildon to Southend. One bus per hour terminates at Basildon but with most journeys connecting with X1 departures.	26/12/25

TravelEssex website

Your one-stop-shop for all things TravelEssex.

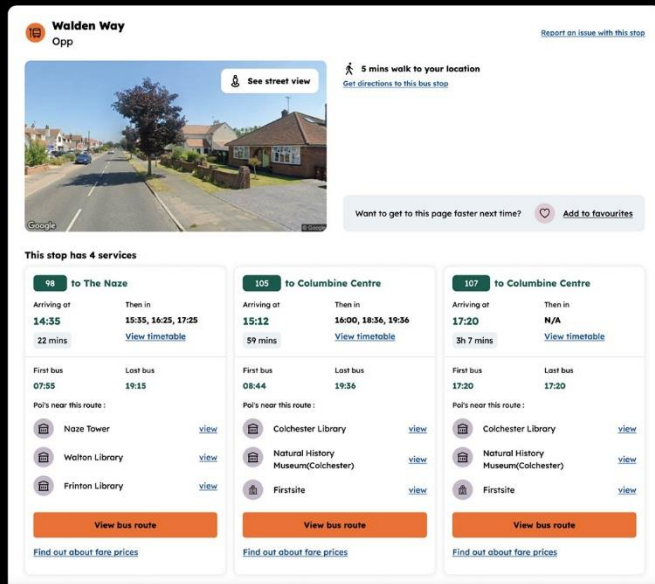
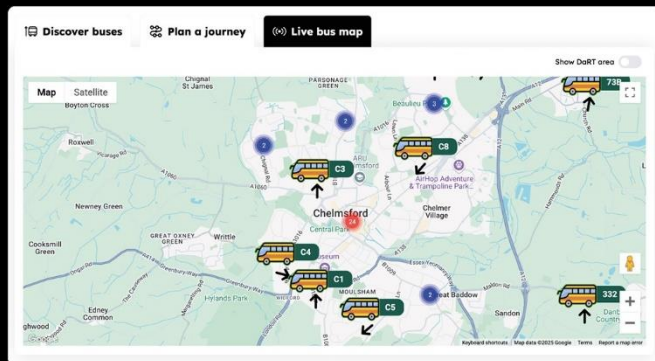


Discover buses

Plan a journey

Live bus map

www.travelessex.co.uk



Report it!



If you see a damaged bus shelter, a missing timetable, or a fault with a real time electronic display at one of our bus stops, you can report it here:

www.essexhighways.org/tell-us/other/bus-stops



Hop on board!

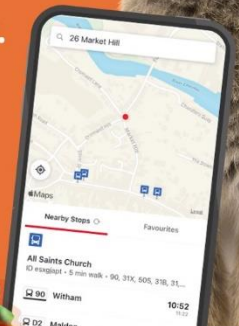
The easy way to plan your journey throughout Essex.

Download the TravelEssex app today.



GET IT ON
Google Play

Download on the
App Store



TravelEssex newsletter



Bus Passenger News is also available as part of our **TravelEssex newsletter**, sent to your mailbox each month.

To manage your subscription visit:
pages.news.essex.gov.uk/pages/travelessex

Keeping in touch

@TravelEssexNews

facebook.com/TravelEssex

instagram.com/TravelEssex

