

# Bus Passenger News

Bus Passenger News provides information on forthcoming local bus service changes in Essex. A summary of each change is provided below. If you would like further information about a particular service, contact your Transport Provider – contact details are available from [www.TravelEssex.co.uk](http://www.TravelEssex.co.uk).

TravelEssex has agreed common registration dates for new registrations, variations, and cancellations. At the time of publication, the next change date is

**Sunday 31 August 2025**

Service	Route & Operator	Summary of Changes	Start Date
5	Sumners – Harlow Bus Station <i>Central Connect</i>	Revised Saturday timetable. Several morning journeys in both directions withdrawn. Late evening journey added from Harlow Bus Station at 2245.	01/09/2025
7	Saffron Walden – Cambridge <i>Stagecoach in Cambridge</i>	Due to the withdrawal of school service 607 from September 2025 one AM and one PM journey on Service 7 will be diverted via Sawston Village College.  This change does not affect any journeys operating within Essex.	31/08/2025
8	Rettendon Common – Wickford <i>Central Connect</i>	Revised timetable including the withdrawal of one Monday to Friday journey.	01/09/2025
9	Basildon – Brentwood <i>First Essex</i>	Revised timetable on Monday to Fridays.	31/08/2025
9-9A	Rayleigh – Shoeburyness or Landwick <i>Arriva</i>	Saturday frequency reduced to every 20 minutes.	31/08/2025
12	Wickford – Billericay <i>Central Connect</i>	Revised timetable.	01/09/2025
13-13A-13B-13C-14	Waltham Cross – Upshire, Epping, North Weald, Ongar <i>Central Connect</i>	Revised timetable Monday - Saturday. The service has some journeys extended to Ongar and will operate as 13C.	01/09/2025

Service	Route & Operator	Summary of Changes	Start Date
15-15A-15B	Waltham Cross – Upshire (15B) or Harlow (15) <i>Central Connect</i>	Revised timetable Monday - Saturday to improve punctuality.	01/09/2025
16-16C	Waltham Cross – Circular via Shernbroke Road or Loughton <i>Central Connect</i>	Revised timetable on Monday to Saturdays, with some peak journeys terminating or starting in the Shernbroke Road area. Service now has an enhanced weekday evening peak timetable and Saturdays revised from every 30 to every 40 mins.	01/09/2025
17	Guilden Morden – Cambridge <i>A2B Travel Group Ltd</i>	Short notice timetable revision due to request from Melbourn Village College. Additional timekeeping alterations as a result of long term roadworks and increased traffic.	01/09/2025
18-18A-18C	Loughton – North Weald or Ongar <i>Central Connect</i>	Revised timetable Monday - Saturday.	01/09/2025
20-21-22-22B	Harlow – Epping and Ongar <i>Central Connect</i>	Revised timetable Monday - Saturday.	01/09/2025
21-21S	Canvey – Shoeburyness <i>First Essex</i>	Revised route and timetable, running hourly Monday to Saturday with additional journeys at school times. Rerouted east of Southend city centre to run along Woodgrange Drive and past Thorpe Bay station, instead of Southchurch Rd, Bournes Green Rd and Maplin Way North (see 26). From Great Wakering Church the service continues to Shoeburyness East Beach, instead of Landwick.	31/08/2025
23-23A-23B	Southend Airport or Business Park – Leigh- on-Sea Rail Station <i>Stephensons</i>	New service from Leigh-on-Sea Rail Station to Southend Airport (23 and 23A) and Airport Business Park (23B). Route 23A operates daily and Route 23B operates on Monday to Fridays only. A single journey operates as Route 23 on Monday to Friday afternoons, taking a more direct route towards Leigh Station.	31/08/2025
24 (Southend)	Southchurch – Southend Travel Centre <i>Stephensons</i>	Revised timetable.	01/09/2025
25-25B	Harlow – Cheshunt, Brookfield Centre <i>Central Connect</i>	Revised timetable Monday - Saturday. Some short trips withdrawn and enhanced weekday AM timetable.	01/09/2025

Service	Route & Operator	Summary of Changes	Start Date
25-825	Basildon – Southend <i>First Essex</i>	Revised timetable with some quieter journeys removed.	31/08/2025
26-26A	Harlow Bus Station – Circular via Little Parndon <i>Central Connect</i>	Revised weekday timetable.	01/09/2025
26	Southend Travel Centre – Shoeburyness East Beach <i>First Essex</i>	Revised route and timetable. All journeys will operate from Southend Travel Centre to Shoeburyness East Beach. Journeys to and from Shoebury ASDA are removed. Route adjusted to go via Liftstan Way and Woodgrange Drive.	31/08/2025
27-27A-827	Canvey – Southend <i>First Essex</i>	Minor changes to the Saturday evening service, and to the schoolday 827.	31/08/2025
28	Southend – Basildon <i>First Essex</i>	Minor changes to the timetable. The last Monday to Friday trip from Southend (23:25) will terminate at Hadleigh.	31/08/2025
31-331-332-333	Chelmsford – Burnham-on-Crouch <i>First Essex</i>	Revised timetable on Monday to Fridays and Saturdays including additional Monday to Friday journeys funded by the 'Love Your Bus' scheme.	31/08/2025
37	Warley - Brentwood – Bishops Hall Estate <i>First Essex</i>	Monday to Friday and Saturday commercial service withdrawn and replaced by Central Connect's Service 60 (see below entry). Sunday and Bank Holiday service is funded by Essex County Council and will continue unchanged.	31/08/2025
42 (was 89)	Braintree – Sudbury <i>Konectbuses</i>	Revised route and timetable. Original 89 service will be partly replaced by the 42 and the 'New 89' Service (see below).	31/08/2025
43-43A-43B-X43 (was 84-784)	Bury St Edmunds – Sudbury – Colchester <i>Konectbuses</i>	Revised route and timetable. Some weekday services will operate as Route 43, which is similar to Route 43B but omits Leavenheath High Road and usually also Assington, or as Route 43A, which is similar to Route X43 but includes Leavenheath High Road and Assington.	31/08/2025
44 (Thurrock)	Grays – Lakeside <i>Ensignbus</i>	Removal of one school day morning journey from Grays and the minor retiming of the other. Minor retiming to the Friday afternoon school journey from Purfleet.	03/09/2025
44-44A (was 754-756)	Colchester – Sudbury <i>Konectbuses</i>	Revised route and timetable. The 44 and 44A will replace the 754 and 756 from Colchester to Sudbury.	31/08/2025
51	Highwoods – Wivenhoe <i>First Essex</i>	Revised timetable.	31/08/2025

Service	Route & Operator	Summary of Changes	Start Date
51	Chafford Hundred Rail Station – Southend High School for Boys <i>NIBSbuses</i>	Minor changes to afternoon journey.	02/09/2025
52	Stanway – Highwoods <i>First Essex</i>	Revised timetable.	31/08/2025
54	Colchester City Centre – Greenstead <i>First Essex</i>	Revised timetable.	31/08/2025
55-55A	Colchester – West Mersea <i>First Essex</i>	Monday to Saturday revised to run hourly as service 55 between Colchester City Centre and West Mersea, with short journeys retained every 30 minutes on Sundays.	31/08/2025
56-57	Colchester – Shrub End <i>First Essex</i>	Revised timetable. Most journeys now terminate at Osborne Street (except on Sundays).	31/08/2025
60	Warley – Brentwood – Bishops Hall Estate <i>Central Connect</i>	Service 60 will broadly operate an hourly timetable Monday-Saturday between Warley, Eagle Way and Pilgrims Hatch (Bishop's Hall Estate) via Brentwood Station and High Street. On Saturdays there will be a small number of two-hourly gaps between buses.  Sunday and Bank Holiday service is funded by Essex County Council and will continue unchanged.	01/09/2025
68-68A	West Mersea – Colchester <i>First Essex</i>	Revised timetable. Removal of commercial 68 journey Mon – Sat from Highwoods to West Mersea.	31/08/2025
70	Marks Tey – Colchester <i>Konectbuses</i>	Service withdrawn.	30/08/2025
70-170-370	Marks Farm – Chelmsford <i>First Essex</i>	Revised timetable on Mondays to Fridays with a reduction in service.	31/08/2025
71-371-372-X71	Chelmsford – Colchester <i>First Essex</i>	Revised timetable Monday – Saturday.	31/08/2025
73 (Thurrock)	Lakeside – Tilbury <i>Ensignbus</i>	The 16:20 college days only journey from Palmer's will no longer operate on Fridays.	03/09/2025
87	West Mersea – Colchester <i>First Essex</i>	Revised timetable.	31/08/2025
89 (New)	Great Yeldham – Halstead <i>Konectbuses</i>	Partial replacement for existing Service 89 which is being renumbered as Service 42 and rerouted via Sudbury and onwards towards Bury St. Edmunds.	31/08/2025
92	Ipswich – Colchester <i>Ipswich Buses</i>	Revised timetable with additional journey Monday – Saturday.	31/08/2025

Service	Route & Operator	Summary of Changes	Start Date
100	Stow Maries – Ormiston Rivers Academy <i>Fords Coaches</i>	Withdrawal due to loss of school contract with ECC.	02/09/2025
102-104	Harwich – Colchester <i>First Essex</i>	Monday to Friday evening peak journeys at 1655 & 1725 now combined to form one journey at 1710. Minor changes to some other journeys.	31/08/2025
331	Braintree, Kings Park Village – Great Dunmow, Helena Romanes School <i>Central Connect</i>	New school days only service from Helena Romanes School via Felsted, Great Notley to Braintree.	01/09/2025
333	Stansted Airport – Braintree <i>Central Connect</i>	Revised timetable. The 07:40 departure from Braintree and the 15:15 from Stansted Airport now serve Helena Romanes School on Monday to Fridays.	01/09/2025
347 (Flexible)	Hatfield Broad Oak – Harlow <i>Epping Forest Community Transport</i>	Fixed service withdrawn and replaced with a flexible replacement service. Passengers will need to book their journeys in advance on <b>01992 579556</b> .	08/09/2025
351	Chelmsford – Warley <i>First Essex</i>	Revised timetable on Monday to Fridays and Saturdays including additional Monday to Friday journeys funded by the 'Love Your Bus' scheme.	31/08/2025
375 (TfL)	Passingford Bridge – Romford <i>Arriva</i>	Revised route and timetable between Romford Station and Collier Row to mitigate the expected traffic delays due to closure of Gallows Corner Roundabout.	23/08/2025
		Return to normal route following completion of roadworks. Revised timetable.	20/09/2025
417-419	Rayne (417) or Gt Saling (419) – Newport, JF Academy <i>Stephensons</i>	Revised timetable for service 417 only.	02/09/2025
446	Berden – Saffron Walden High School <i>Stephensons</i>	Revised route and timetable. The service will no longer serve Brent Pelham.	02/09/2025
491-492	Epping – North Weald <i>Stephensons</i>	Revised timetable.	03/09/2025
493	Fyfield – Epping <i>Stephensons</i>	Revised route and timetable to include Toot Hill.	03/09/2025
608 (TfL)	Gallows Corner – Brentwood and Shenfield <i>Go-Ahead</i>	Revised timetable in line with school opening times.	01/09/2025

Service	Route & Operator	Summary of Changes	Start Date
625	Chelmsford – Southend High School for Boys <i>First Essex</i>	Revised route and timetable including changing the route start point to Wood Street Tesco.	31/08/2025
721 (open top)	Braintree – Great Yeldham <i>ZERO2 Bus Museum</i>	Open-top bus operating on Saturdays, Sundays and Bank Holidays from 20 September 2025 until 26 October 2025.	23/08/2025
725	Basildon – Southend <i>First Essex</i>	Service withdrawn.	31/08/2025
807-808-810-811-812	Foulness, Gt Wakering, Lt Wakering – Rochford, Kind Edmund School <i>Stephensons</i>	Revised timetable with Route 813 withdrawn.	02/09/2025
815	Rochford – Westcliff-on-Sea, St Bernards High School <i>Stephensons</i>	Revised route and timetable. The afternoon journey will depart earlier from St Bernards High School, with Westcliff High Schools served afterwards.	02/09/2025
816	Ashingdon – Westcliff-on-Sea, St Bernards High School <i>Stephensons</i>	Revised route and timetable. The afternoon journey will depart earlier from St Bernards High School, with Westcliff High Schools served afterwards.	02/09/2025
817 (Southend)	Southchurch – Westcliff <i>Stephensons</i>	Revised timetable.	02/09/2025
A1 (Clacton Air Show)	Clacton Shopping Village – Clacton Seafront <i>Konectbuses</i>	Park & Ride shuttle for Clacton Air Show (21st and 22nd August 2025).	21/08/2025
C2	Chelmsford Bus Station – Broomfield Hospital <i>First Essex</i>	Revised timetable Monday – Friday.	31/08/2025
X10	Stansted Airport – Chelmsford – Basildon <i>First Essex</i>	Revised timetable, Sundays only. The 0015 departure from Stansted Airport will depart at 0020.	31/08/2025
X20 & 320	Colchester – Braintree – Stansted Airport <i>First Essex</i>	1440 and 1735 service 320 journeys from Colchester withdrawn. 0835 X20 terminates at Osborne St not North Station, with the corresponding next journey re-starting from the High St at 10.40, instead of North Station.	31/08/2025
X30	Stansted Airport – Chelmsford Bus Station – Southend Travel Centre <i>First Essex</i>	Stops added to route near junction of Gunn Close and London Road in Rayleigh. No change to registered route or timetable.	31/08/2025



# TravelEssex website

Your one-stop-shop for all things TravelEssex.

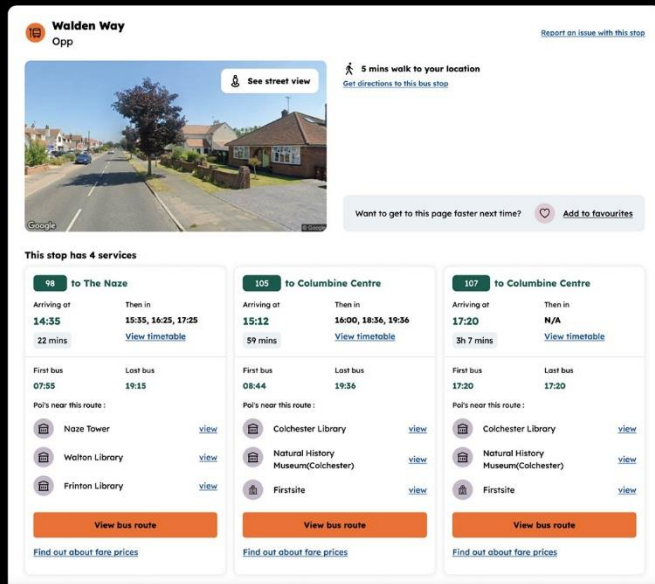
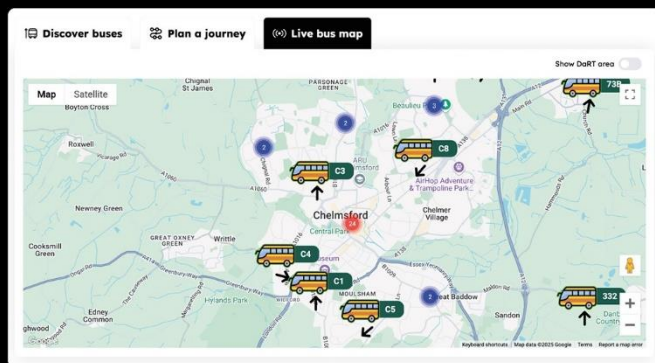


Discover buses

Plan a journey

Live bus map

[www.travelessex.co.uk](http://www.travelessex.co.uk)



## Report it!



If you see a damaged bus shelter, a missing timetable, or a fault with a real time electronic display at one of our bus stops, you can report it here:

[www.essexhighways.org/tell-us/other/bus-stops](http://www.essexhighways.org/tell-us/other/bus-stops)



## Hop on board!

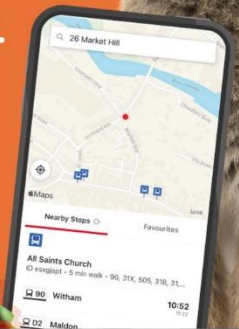
The easy way to plan your journey throughout Essex.

Download the TravelEssex app today.



GET IT ON  
Google Play

Download on the  
App Store



## TravelEssex newsletter



Bus Passenger News is also available as part of our **TravelEssex newsletter**, sent to your mailbox each month.

To manage your subscription visit:  
[pages.news.essex.gov.uk/pages/travelessex](http://pages.news.essex.gov.uk/pages/travelessex)

## Keeping in touch

@TravelEssexNews  
 [facebook.com/TravelEssex](https://facebook.com/TravelEssex)  
 [instagram.com/TravelEssex](https://instagram.com/TravelEssex)

