

Bus Passenger News

Bus Passenger News provides information on forthcoming local bus service changes in Essex. A summary of each change is provided below. If you would like further information about a particular service, contact your Transport Provider – contact details are available from www.TravelEssex.co.uk.

TravelEssex has agreed common registration dates for new registrations, variations, and cancellations. At the time of publication, the next change date is:

Sunday 26 July 2026

Service	Route & Transport Provider	Summary of Changes	Start Date
1	Harlow Bus Station – Circular via Sumners and Katherines <i>Central Connect</i>	Revised Sunday timetable with Harlow Town Station no longer served and minor adjustments to timings.	26/07/2026
2-3	Harlow Town Rail Station – Harlow Town Rail Station <i>Central Connect</i>	Revised Sunday timetable.	26/07/2026
4	Harlow Town Railway Station – Circular via Latton Bush <i>Central Connect</i>	Revised Sunday timetable with all journeys starting and finishing at Harlow Town Railway Station.	26/07/2026
5	Harlow Bus Station – Sumners Farm <i>Central Connect</i>	Revised Sunday timetable with earlier start, an increased number of journeys, and an earlier finish. Late evening journeys on Saturdays withdrawn.	26/07/2026
6-6A	Clacton – Point Clear <i>Central Connect (formerly Konectbuses)</i>	Revised timetable. Additional summer school holiday journeys have been added from 19 July until 29 August 2026.	19/07/2026
7-7A	Stansted Airport – Bishop’s Stortford <i>Stephensons of Essex</i>	Revised timetable. Change of transport provider from Stephensons of Essex to Central Connect.	26/07/2026

Service	Route & Transport Provider	Summary of Changes	Start Date
7-8 (Southend)	Landwick – Southend - Rayleigh <i>First Essex Buses</i>	Essex County Council contracted Service 7 evening journeys transferred from First Essex to Arriva. 7A journeys withdrawn. Revised timetable.	26/07/2026
8	Clacton – Holland <i>Central Connect (formerly Konectbuses)</i>	Introduction of Monday to Saturday seasonal service between Clacton-on-Sea and Holland-on-Sea, operating a 30-minute frequency from 0900-1800	20/07/2026
8	Rettendon Common – Wickford <i>Central Connect</i>	Revised Monday to Friday timetable with additional weekday journeys. Reduced service on Saturdays.	26/07/2026
9	Basildon – Brentwood <i>First Essex Buses</i>	Essex County Council contract awarded to NIBS. Commercially operated journeys on Monday to Fridays will also be withdrawn. The section of route between Basildon and Laindon High Road, up to the junction with the A127, will additionally be served by an extended Service 351.	26/07/2026
10	Clacton – St Osyth <i>Central Connect (formerly Konectbuses)</i>	Introduction of Monday to Saturday seasonal service between Clacton-on-Sea and St Osyth Beach holiday parks. Three journeys in each direction.	20/07/2026
10-10A	Wickford – Basildon <i>Central Connect</i>	Revised timetable. The introduction of a 2 hourly service 10A from Wickford - Billericay via Ramsden Heath & Downham.	26/07/2026
12	Wickford – Billericay <i>Central Connect</i>	Change of transport provider from Central Connect to NIBS under contract to Essex County Council.	25/07/2026
13-13A-13B-13C-14	Ongar, North Weald, Upshire – Waltham Cross <i>Central Connect</i>	Enhanced weekday service with departures generally every 30 minutes. Revised Saturday timetable.	26/07/2026
14	Harlow – Circular via Pinnacles <i>First Essex Buses</i>	Change of transport provider from First Essex Buses to Stephenson's of Essex. Revised timetable and removal of Saturday timetable.	26/07/2026
15	Marks Tey – Circular via Lexden <i>First Essex Buses</i>	Change of transport provider from First Essex Buses to Stephenson's of Essex. Revised timetable. The bus currently performs an anticlockwise loop in the mornings (Marks Tey – Stanway – Lexden – Marks Tey) and a clockwise loop in the afternoon (Marks Tey – Lexden – Stanway – Marks Tey). This arrangement will be reversed (i.e. clockwise in the mornings, anticlockwise in the afternoons).	26/07/2026

Service	Route & Transport Provider	Summary of Changes	Start Date
15-15A	Waltham Cross – Harlow <i>Central Connect</i>	Revised weekday timetable. 15B variant withdrawn.	26/07/2026
16-16C	Waltham Cross – Waltham Cross <i>Central Connect</i>	Revised timetable on Monday to Fridays and Saturdays.	26/07/2026
17-17A	Debden – Loughton <i>Central Connect</i>	Change of transport provider from Central Connect to Stephenson's of Essex. Revised timetable. Please note that commercial journeys on Sundays and one commercial evening journey have been withdrawn.	27/07/2026
18-18C	Ongar, North Weald – Loughton <i>Central Connect</i>	Enhanced timetable on Monday to Fridays and Saturdays. 18A variant withdrawn.	26/07/2026
19-19A	North Weald – High Ongar <i>Central Connect</i>	New service. Two hourly timetable on Monday to Fridays from High Ongar to North Weald, via Abridge, Theydon Bois, and Epping.	26/07/2026
19-19A	Chelmsford – Harlow <i>First Essex Buses</i>	All Monday to Saturday journeys withdrawn, with only one 19A Sunday journey each way remaining: 08:10 from Westway Depot and 23:45 from Harlow Temporary Bus Station.	02/08/2026
20-21-22-22B	Ongar, Epping – Harlow <i>Central Connect</i>	Revised timetable on Monday to Fridays and Saturdays to allow more consistent common headways with other services.	26/07/2026
23	Harlow – Circular via Church Langley <i>Central Connect</i>	Monday to Friday and Saturday daytime timetable added. Revised and enhanced Sunday timetable.	26/07/2026
24	Harlow Bus Station – Circular via River Way <i>Central Connect</i>	Minor weekday adjustments including removal of 20:40 departure from Harlow Bus Station. Enhanced and extended Saturday timetable.	26/07/2026
25-25B-25C	Harlow – Cheshunt, Hoddesdon, Broxbourne <i>Central Connect</i>	Revised timetable on all days including later journeys. Enhanced peak frequency on weekdays. One return journey extended to Waltham Cross and given route number 25C.	26/07/2026
26-26A	Harlow – Circular via Little Parndon <i>Central Connect</i>	Revised timetable on all days. 26A variant withdrawn and replaced with regular 26 journeys.	26/07/2026
27	Mark Hall – Princess Alexandra Hospital – Enterprise Park <i>Central Connect</i>	Revised timetable.	26/07/2026

Service	Route & Transport Provider	Summary of Changes	Start Date
28	Harlow – Circular via Old Harlow <i>Central Connect</i>	Revised Sunday timetable. Saturday evening journeys withdrawn.	26/07/2026
31-331-332-333	Heybridge, Burnham – Chelmsford <i>First Essex Buses</i>	Revised timetable. An enhanced Friday only evening journey from Maldon - Burnham on Crouch departing at 2349 and Burnham on Crouch - Maldon departing at 2335.	26/07/2026
32-32A	Broxbourne, Rye Park – Harlow <i>Central Connect</i>	Additional morning journey added at 07:00 from Harlow Bus Station. Return journey added from Harlow to John Warner School via Roydon (using the route number 32A). Morning 32A journey only operates on school days.	26/07/2026
33-33A	Harlow (33A) or Hoddesdon (33) – Bishop's Stortford <i>Central Connect</i>	33A variant added to existing Service 33. Two return journeys each weekday between Harlow and Bishop's Stortford.	26/07/2026
40	Witham – Witham <i>Central Connect (formerly Konectbuses)</i>	Revised route and timetable with service now operating on Monday to Saturdays (previously Mondays, Wednesdays and Saturdays). Route extended to Aldi.	27/07/2026
42A	Bishop's Stortford – Chelmsford <i>First Essex Buses</i>	Monday to Friday school journeys withdrawn. Sunday timetable remains.	26/07/2026
45	Bradwell – South Woodham Ferrers <i>Central Connect</i>	Change of Transport Provider from Central Connect to Stephenson's of Essex. Revised timetable including introduction of Saturday journeys funded by Love Your Bus grant money.	27/07/2026
46	Ongar – Chelmsford <i>Central Connect</i>	The introduction of evening journeys Ongar - Chelmsford with a 2 hourly frequency departing Ongar at 1825.	26/07/2026
47	Chelmsford Bus Station – Broomfield Hospital <i>First Essex Buses</i>	Extra trips added on Monday to Fridays.	26/07/2026
48	West Hanningfield – Pleshey <i>Stephenson's of Essex</i>	Essex County Council contract re-awarded to Stephenson's of Essex with amended timetable. The first journey from Little Waltham and the last journey from West Hanningfield are removed from the timetable.	26/07/2026
60	Braintree – Sudbury <i>Flagfinders</i>	Service withdrawn. Alternative journeys possible on Service 42 (Central Connect (formerly Konectbuses)).	25/07/2026

Service	Route & Transport Provider	Summary of Changes	Start Date
60	Warley – Circular via Pilgrims Hatch <i>Central Connect</i>	Revised timetable. Additional journeys on Saturdays.	26/07/2026
63	Rayleigh – Landwick <i>First Essex Buses</i>	Change of Transport Provider from First Essex Buses to Stephenson's of Essex. Revised timetable and change of operational days (was Wed & Fri now Mon, Wed & Fri).	27/07/2026
64	Ongar – Warley <i>Central Connect</i>	New weekday service between Ongar and Warley via Kelvedon Hatch and Brentwood. Five journeys from Ongar, four from Warley, and a further two starting at Brentwood Rail Station.	26/07/2026
66	Hammond Street – Loughton <i>Arriva</i>	Revised route and timetable. Extension beyond Waltham Cross to Brookfield Farm and Hammond Street. Service now curtails at Waltham Cross Bus Station at 20:19 Monday to Friday, and 20:10 Saturdays.	26/07/2026
73 (Thurrock)	Tilbury – Lakeside <i>Ensignbus</i>	Route restored to run via southern side of Tilbury Civic Square.	23/06/2026
85	Colchester – Circular via Layer Breton <i>First Essex Buses</i>	Revised route and timetable. The morning journey will be a clockwise loop from Colchester City Centre to Layer Breton via Layer de la Haye, then returning to the City Centre via Copford and Stanway Sainsbury's. The afternoon journey follows the same route but in an anticlockwise direction.	29/07/2026
92	Colchester – Layer Breton <i>First Essex Buses</i>	Service withdrawn. This withdrawal is for the Wednesday-only service operated by First Essex Buses. The Central Connect (formerly Konectbuses) Monday to Saturday service is unaffected.	26/07/2026
94-94A- 94B	Basildon – South Woodham Ferrers <i>NIBSbuses</i>	Reduced Monday to Friday morning journeys on Service 94-94A.	27/07/2026
99 (Thurrock)	Tilbury Riverside – Circular via Tilbury Town and ASDA <i>Ensignbus</i>	Route restored to run via southern side of Tilbury Civic Square.	23/06/2026
99	Chelmsford – Woodham Walter <i>Central Connect (formerly Konectbuses)</i>	ECC contract awarded to Stephenson's of Essex. Revised route and timetable, including extension to South Woodham Ferrers with funding from the Love Your Bus scheme.	27/07/2026

Service	Route & Transport Provider	Summary of Changes	Start Date
102-104	Harwich – Colchester <i>First Essex Buses</i>	Revised timetable with Monday to Saturday evening journeys on Service 102 removed due to end of contract with Essex County Council. Sunday journeys on Service 102 remain with First Essex Buses, with the Monday to Saturday evening journeys being transferred to Central Connect (formerly Konectbuses).	26/07/2026
251	Rettendon/Wickford – Warley <i>First Essex Buses</i>	Change of transport provider from First Essex Buses to Central Connect. Additional commercially funded journeys will operate in addition to the council funded timetable. Some journeys will extend to and from Rettendon on a commercially funded basis.	26/07/2026
251	Hammond Street – Upshire <i>Arriva</i>	Revised timetable to interwork with 66 between Waltham Abbey and Hammond Street. Reduction in frequency between Upshire and Waltham Abbey to every 30 minutes.	26/07/2026
305	Bishop's Stortford – Stansted Airport <i>Central Connect</i>	Change of transport provider from Central Connect to Stephenson's of Essex. Revised timetable.	27/07/2026
306	Wicken Bonhunt – Bishop's Stortford <i>Central Connect</i>	Revised timetable to better reflect traffic conditions and school finish times.	26/07/2026
315-325	Bishop's Stortford – Circulars via Great and Little Hallingbury <i>Central Connect</i>	Following consultation, Services 315 and 325 will be withdrawn.	25/07/2026
322-323-324	Great Dunmow – Saffron Walden <i>Central Connect</i>	Change of operator from Central Connect to Stephenson's of Essex. Revised timetable including: Service 323 0635 journey from Takeley withdrawn; Service 323 1900 journey from Great Dunmow withdrawn; Service 323 1952 journey from Great Dunmow withdrawn; All 335 journeys withdrawn.	27/07/2026
332-333	Braintree – Stansted Airport <i>Central Connect</i>	Minor timetable change to weekday afternoon/evening peak times. Journeys via Dunmow Road/The Causeway renumbered as Service 332.	26/07/2026
336	South Woodham – Chelmsford <i>First Essex Buses</i>	Revised timetable. Additional Sunday journeys added with funding from Love Your Bus 2 Grant Fund.	26/07/2026

Service	Route & Transport Provider	Summary of Changes	Start Date
351	Chelmsford – Basildon via Brentwood <i>First Essex Buses</i>	Revised timetable with some journeys on Monday to Friday and most journeys on Saturdays extended beyond Warley to start and finish at Basildon Hospital (following part of the Service 9 route). No change to Essex County Council funded Sunday timetable.	26/07/2026
375 (TfL)	Passingford Bridge – Romford <i>Arriva</i>	Revised timetable.	04/07/2026
397	Debden – Salisbury Hall Sainsburys <i>Central Connect</i>	Enhancement to the TfL service 397, with 1 additional late journey in each direction Departing Debden at 2015 and Salisbury Hall at 2115.	26/07/2026
407-417	Old Harlow – Harlow <i>First Essex Buses</i>	Change of transport provider from First Essex Buses to Stephenson's of Essex.	27/07/2026
509-509A-510-510A	Harlow – Stansted Airport <i>Arriva</i>	Simplified Monday to Friday timetable with no frequency change during school holidays.	26/07/2026
721	Braintree Rail Station – ZERO2 Bus Museum or Gt. Yeldham <i>Zero2 Buses</i>	Revised route and timetable with alteration to running days. Two return journeys per day with one return journey extending from/to Great Yeldham. Operates on weekends and bank holidays until 18 October 2026. Also operates on Wednesdays from 22nd July until 2nd September 2026.	20/06/2026
826	Castle Hedingham – Colchester <i>Flagfinders</i>	Service withdrawn at end of academic year. From September 2026 these journeys will be run as part of a revised Service 88.	25/07/2026
A1	Waltham Cross – Waltham Abbey <i>Central Connect</i>	New service from Waltham Cross to Waltham Abbey via Holdbrook Estate. Eight return journeys each weekday.	26/07/2026
A2	Waltham Abbey, Quaker Lane – Circular via Roundhills <i>Central Connect</i>	New circular service from Quaker Lane via Roundhills. Six journeys each weekday.	26/07/2026
A3	Waltham Abbey, Quaker Lane – Lee Valley Campsite <i>Central Connect</i>	New service between Waltham Abbey and Lee Valley Campsite via Sewardstone. Seven return journeys each weekday.	26/07/2026

Service	Route & Transport Provider	Summary of Changes	Start Date
B1	Basildon Bus Station – Harold Wood Station <i>First Essex Buses</i>	Most daytime journeys are extended beyond Laindon Fenton Way to run to Harold Wood Station via Westmayne and the A127. The section of route between Basildon, Great Knightleys, and Laindon Centre is coordinated with a revised service B2 to provide a bus up to every 10 minutes on Monday to Saturday and up to every 15 minutes on Sundays & Public Holidays.	26/07/2026
B2-B2E	Fenton Way West – Basildon Bus Station <i>First Essex Buses</i>	Service re-registered to run between Basildon, Laindon Centre and Victoria Road in Great Knightleys. Evening tendered journeys will continue to follow the previous B2 route and are renumbered as B2E.	26/07/2026
B3	Pitsea – Basildon <i>First Essex Buses</i>	Revised Sunday timetable.	26/07/2026
B6	Laindon Shopping Centre – Basildon Hospital <i>First Essex Buses</i>	The B6 replaces part of the route currently provided by the B2 (from Basildon Hospital to Laindon Shopping Centre). All journeys will go via Laindon Link rather than via The Knares. Hourly service on Monday to Saturdays. Evening tendered journeys on the current route B2 will continue to serve the old route in its entirety (including the Knares) and will be labelled as B2E.	26/07/2026
C1	Galleywood – Broomfield Hospital <i>First Essex Buses</i>	Revised Monday to Friday timetable with departures up to every 10 minutes during weekday daytime. Minor timetable changes on Saturdays and Sundays. Route changed to omit Court Road in Broomfield, except for some evening journeys. Later last journey from Broomfield Hospital on Saturdays.	26/07/2026
C2-C2E	Great Baddow – Broomfield Hospital <i>First Essex Buses</i>	Revised route and timetable. The service will extend beyond Chelmsford City Centre via Army & Navy, Baddow Rd, Meadgate Avenue and Vineyards, running in place of the existing C7 to Great Baddow, Readers Corner. Sunday evening Essex County Council funded journeys are renumbered as C2E	26/07/2026

Service	Route & Transport Provider	Summary of Changes	Start Date
C3	North Melbourne – Beaulieu Park Station <i>First Essex Buses</i>	Revised route and timetable. The service will extend beyond Chelmsford City Centre via Army & Navy to Chelmer Road, Chelmer Village, Springfield Sainsbury to Beaulieu Park Station. Typical frequency of one bus every 30 minutes during Monday to Saturday daytime, and one bus every 45 minutes during evenings and on Sundays.	26/07/2026
C4 and C5	Oxney Green – Moulsham Lodge <i>First Essex Buses</i>	C4 and C5 are combined to form a through service with all journeys labelled as C5. More buses will run in the middle of the day on Monday to Friday, and in the early evening.	26/07/2026
C7 and C7E	Chelmsford Bus Station – Galleywood via Great Baddow <i>First Essex Buses</i>	Essex County Council funded evening journeys will continue to follow the existing route, with commercial journeys being registered separately and rerouted via Beehive Lane. The funded journeys will be labelled as C7E to differentiate them from the new C7 route.	26/07/2026
C8, C9, C10	Beaulieu Station (Clockwise Circular) – via Springfield & Beaulieu Park (C8) and Beaulieu Station (Anticlockwise Circular) – via Beaulieu and Springfield (C9) Chelmsford Bus Station – Channels via Springfield (C10) <i>First Essex Buses</i>	Revised route and timetable. The C8 will operate as a clockwise circular from Beaulieu Station, via the current C8 route to Chelmsford Bus Station, then via part of the current C10 route as far as Brackendon Drive, and then via current C9 route back to Beaulieu Station. C11 has been withdrawn and partly replaced by changes to Services C8, C9 and C10.	26/07/2026
C11	Chelmsford Bus Station – Beaulieu Park Station <i>First Essex Buses</i>	Service withdrawn and replaced with journeys on other services – see above.	26/07/2026
DaRT 3 and DaRT 299	Flexible Areas NE Braintree District (DaRT 3) and Flexible areas in Uttlesford and Braintree District (DaRT 299) <i>Flagfinders</i>	DigiGo expansion to cover the DaRT 3 and DaRT 299 operating areas. Available from 0700 to 2200, Monday to Sunday (excluding bank holidays).	25/07/2026

Service	Route & Transport Provider	Summary of Changes	Start Date
HH2 (Hospital Hopper)	Tendring Flexible Areas - Colchester <i>Tendring Community Transport</i>	Service extended to cover Walton and Frinton and surrounding area on Mondays, Wednesdays, and Fridays, and Brightlingsea and surrounding areas on Tuesday and Thursdays.	01/07/2026
X70	Colchester - Chelmsford via Braintree <i>First Essex Buses</i>	Revised timetable. Both afternoon journeys removed.	26/07/2026
z75 (New)	Colchester City Centre - Colchester Zoo <i>First Essex Buses</i>	New seasonal service operating between Colchester City Centre and Colchester Zoo via Lexden Road and Peartree Road. Seven return journeys each day on Saturdays, Sundays, and Bank Holidays from 25 July 2026 until 31 August 2026 (inclusive).	25/07/2026

TravelEssex website

Your one-stop-shop for all things TravelEssex.

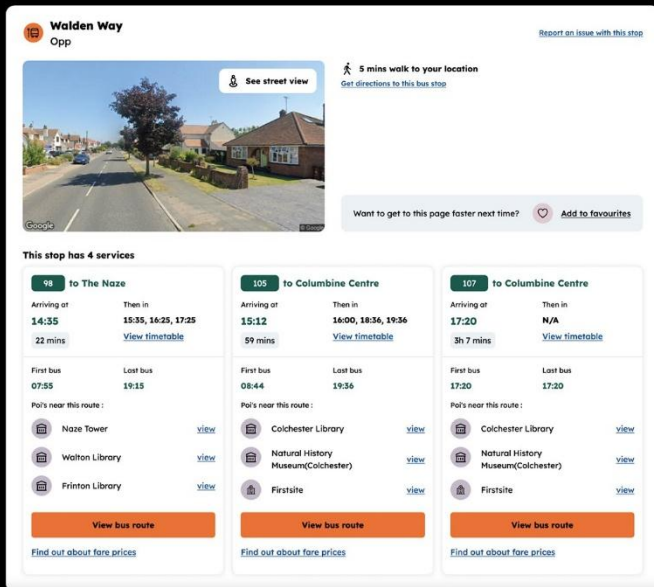
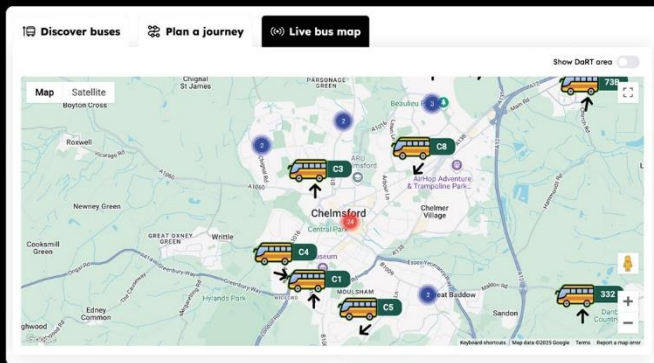


Discover buses

Plan a journey

Live bus map

www.travelessex.co.uk



Report it!



If you see a damaged bus shelter, a missing timetable, or a fault with a real time electronic display at one of our bus stops, you can report it here:

www.essexhighways.org/tell-us/other/bus-stops



Hop on board!

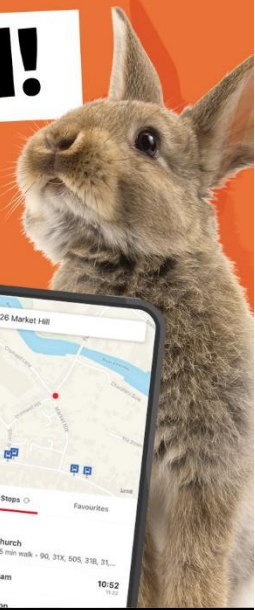
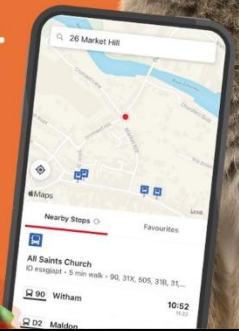
The easy way to plan your journey throughout Essex.

Download the TravelEssex app today.



GET IT ON Google Play

Download on the App Store



TravelEssex newsletter



Bus Passenger News is also available as part of our TravelEssex newsletter, sent to your mailbox each month.

To manage your subscription visit: pages.news.essex.gov.uk/pages/travelessex

Keeping in touch

- @TravelEssexNews
- facebook.com/TravelEssex
- instagram.com/TravelEssex

