

# Bus Passenger News

Bus Passenger News provides information on forthcoming local bus service changes in Essex. A summary of each change is provided below. If you would like further information about a particular service, contact your Transport Provider – contact details are available from [www.TravelEssex.co.uk](http://www.TravelEssex.co.uk).

TravelEssex has agreed common registration dates for new registrations, variations, and cancellations. At the time of publication, the next change date is

**Sunday 22 February 2026**

Service	Route & Operator	Summary of Changes	Start Date
1 (Harlow)	Harlow – Circular via Sumners <i>Arriva</i>	Revised timetable.	22/02/26
1 (Southend)	Rayleigh – Southend Travel Centre <i>Arriva</i>	Revised timetable with frequency reduction on non-school days.	15/02/26
1-1A	Clacton Pier Avenue – Circular via Clacton Shopping Village <i>Konectbuses</i>	Revised timetable. Additional late afternoon and evening journeys added on Sundays.	01/03/26
2-2A	Clacton – Mistley <i>Konectbuses</i>	Revised timetable. Additional Monday to Saturday evening journeys added.	22/02/26
2-2A	Shoeburyness – Southend <i>Arriva</i>	Reduction in frequency on non-school days.	15/02/26
2-3 (Harlow)	Harlow – Circular via Staple Tye <i>Arriva</i>	Revised timetable.	22/02/26
3	Clacton – Harwich <i>Konectbuses</i>	Revised timetable. Additional early morning and evening journeys added. Sunday timetable introduced.	22/02/26

Service	Route & Operator	Summary of Changes	Start Date
4-4A	Clacton Pier Avenue – Circular via Jaywick <i>Konectbuses</i>	Revised timetable. Additional early evening journeys on Sundays.	TBA
6 (Harlow)	Harlow – Circular via Little Parndon <i>Arriva</i>	Revised timetable with one journey removed.	22/02/26
6-6A	Clacton – Point Clear <i>Konectbuses</i>	Revised timetable. Additional journeys added on weekday evenings and Sundays. Earlier start time on weekdays.	22/02/26
7 (Harlow)	Harlow – Circular via Town Station <i>Arriva</i>	Revised timetable with Monday to Friday peak journeys withdrawn and replaced with extended Service 10 journeys.	22/02/26
7-8	Rayleigh – Landwick Cottages <i>Arriva</i>	Revised timetable with frequency reduction on non-school days.	15/02/26
7-98A	Clacton – Walton <i>Konectbuses</i>	Minor revision to evening timetable.	22/02/26
8 (Harlow)	Harlow Bus Station – Old Harlow <i>Arriva</i>	Revised timetable with one journey removed.	22/02/26
9-9A	Clacton – Walton <i>Konectbuses</i>	Revised timetable including the introduction of a 9A variant with journeys operating on Monday to Saturday evenings and on Sundays.	22/02/26
10	Harlow Town Station or Bus Station – Church Langley <i>Arriva</i>	Revised timetable with peak journeys extended to Harlow Town Station.	22/02/26
21-21S	Canvey – Thorpe Bay <i>First Essex Buses</i>	Revised route and timetable. Route will terminate at Thorpe Hall Avenue with the section of route to Shoeburyness via Gt. Wakering removed. Monday to Friday and Saturday timetable adjusted accordingly.	22/02/26
22	Harwich – Circular via Harwich International <i>Konectbuses</i>	Evening journeys and Sunday timetable introduced.	22/02/26
45	Bradwell Waterside – South Woodham Ferrers <i>NIBS</i>	ECC contract awarded to <i>Central Connect</i> . Minor changes to arrival times.	19/02/26
48	Pleshey – Temple Grove <i>Central Connect</i>	ECC contract awarded to <i>Stephensons</i> . The previous operator supplemented the ECC funded timetable with additional journeys, operated on a commercial basis. Only the ECC funded elements will be continued, with the commercial elements withdrawn.	11/03/26

Service	Route & Operator	Summary of Changes	Start Date
59	Harlow – Chelmsford <i>Arriva</i>	Revised timetable including punctuality changes and some journeys being withdrawn.	22/02/26
74-74B	Clacton – Colchester via Wivenhoe <i>Konectbuses</i>	Revised timetable. Additional journeys introduced on Monday to Sunday evenings.	22/02/26
76	Clacton – Colchester via Weeley <i>Konectbuses</i>	Additional evening and Sunday journeys added.	22/02/26
77-77A	Colchester – St Osyth <i>Konectbuses</i>	Saturday timetable introduced.	22/02/26
78	Clacton – Brightlingsea <i>Konectbuses</i>	New service operating between Clacton and Brightlingsea on weekdays and Saturdays. Hourly service with first departure from Clacton at 06:20 and last arrival back at Clacton at 22:00.	23/02/26
87	Great Horkesley – Brightlingsea <i>First Essex Buses</i>	Minor changes to early morning and evening journeys on Monday to Fridays and Saturdays.	22/02/26
88 (Thurrock)	Grays – Orsett <i>Ensignbus</i>	Sunday and Public Holiday timetable introduced (hourly service). Minor timetable adjustment to the Monday to Friday and Saturday times in the Orsett area.	18/01/26
100	Lakeside – Basildon <i>First Essex Buses</i>	Revised timetable on early morning Monday to Friday trips in both directions. Enhanced frequency on Monday to Saturday evenings with departures every 30 minutes. Additional evening journeys added to Sunday timetable (operating hourly).	22/02/26
105-107	Walton – Colchester <i>Konectbuses</i>	Additional evening journeys and Sunday timetable introduced.	22/02/26
200	Grays – Basildon <i>First Essex Buses</i>	Additional early morning and evening journeys on Monday to Fridays and Saturday. Introduction of Sunday timetable operating every 90 minutes. These enhancements are provided due to funding from Thurrock Council.	22/02/26
275 (TfL)	Walthamstow – Barkingside <i>Stagecoach in London</i>	Revised timetables on all days due to commencement of new TfL contract.	28/02/26
309	Thorley Park and Bishop's Stortford – Stansted Airport <i>Arriva</i>	Revised timetable including the standardisation of overnight journeys on all days of the week.	22/02/26
392	Harlow – Hoddesdon <i>Epping Forest Community Transport</i>	Timetable expanded to operate until 20:30 due to funding provided by ECC.	16/02/26

Service	Route & Operator	Summary of Changes	Start Date
407 (Sunday)	Old Harlow – Princess Alexandra Hospital <i>Central Connect</i>	Sunday timetable introduced on Route 407 (to be operated by <i>Central Connect</i> ). Hourly service with fourteen return journeys.	11/01/26
509-509A-510-510A	Harlow – Stansted Airport <i>Arriva</i>	Revised route and timetable with Services 508 and 508A withdrawn. Service 509 and 509A will be routed via Takeley to cover the withdrawn section of route. Combined frequency of 509 and 510 will be one bus every 12-15 minutes on Monday to Saturdays and one bus every 30 minutes on Sundays.	22/02/26
Chelmsford Park & Ride Services	Chelmer Valley and Sandon sites	ECC contract for Sandon and Chelmer Valley services awarded to <i>First Essex Buses</i> .  Sandon – no change to route or timetable.  Chelmer Valley – earlier finish on Monday to Fridays and Saturday timetable will no longer operate.	05/03/26
723	Harlow – Stansted Airport <i>Arriva</i>	New daily service between Harlow and Stansted Airport via Gilden Way and M11. Hourly departures on Monday to Saturday, except for early and late journeys, which operate every two hours. Sunday timetable also has departures every two hours.	22/02/26
724	Harlow – Heathrow Airport <i>Arriva</i>	Revised timetable and additional stopping places added (within Hertfordshire and Greater London).	22/02/26
HH2 (TCT1)	Greater Clacton Flexible Area – Colchester Hospitals <i>Tendring Community Transport</i>	Revised Monday to Friday timetable with increased frequency. Saturday and Sunday timetables remain unchanged.  The route short name has been changed from TCT1 to HH2 to better associate the service with Tendring's other Hospital Hopper.	01/03/26

# TravelEssex website

Your one-stop-shop for all things TravelEssex.

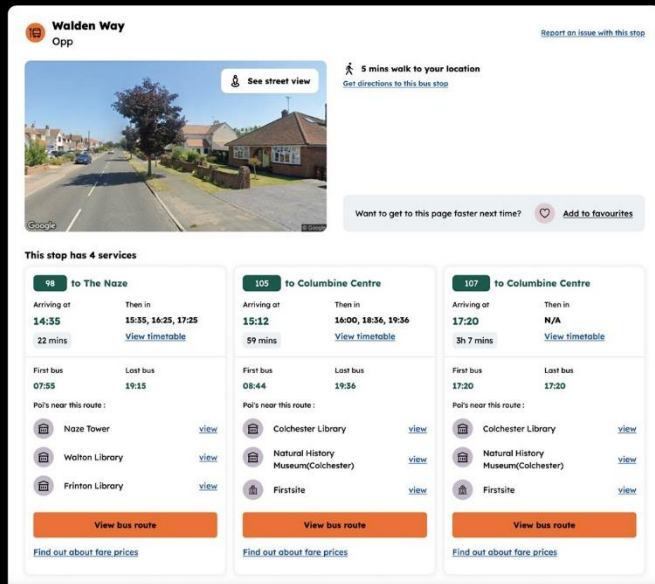
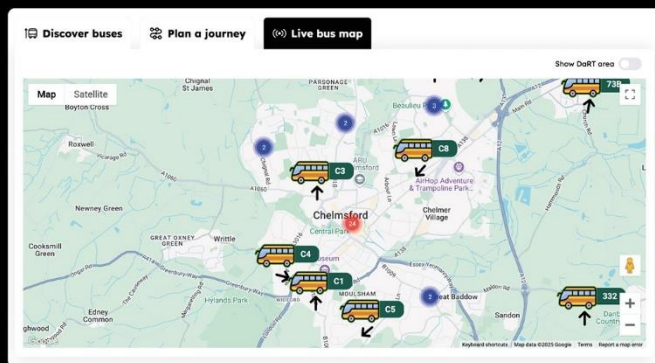


Discover buses

Plan a journey

Live bus map

[www.travelessex.co.uk](http://www.travelessex.co.uk)



## Report it!



If you see a damaged bus shelter, a missing timetable, or a fault with a real time electronic display at one of our bus stops, you can report it here:

[www.essexhighways.org/tell-us/other/bus-stops](http://www.essexhighways.org/tell-us/other/bus-stops)



## Hop on board!

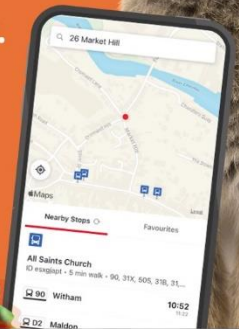
The easy way to plan your journey throughout Essex.

Download the TravelEssex app today.



GET IT ON  
Google Play

Download on the  
App Store



## TravelEssex newsletter



Bus Passenger News is also available as part of our **TravelEssex newsletter**, sent to your mailbox each month.

To manage your subscription visit:  
[pages.news.essex.gov.uk/pages/travelessex](http://pages.news.essex.gov.uk/pages/travelessex)

## Keeping in touch

@TravelEssexNews

[facebook.com/TravelEssex](https://facebook.com/TravelEssex)

[instagram.com/TravelEssex](https://instagram.com/TravelEssex)

