

Bus Passenger News

Bus Passenger News provides information on forthcoming local bus service changes in Essex. A summary of each change is provided below. If you would like further information about a particular service, contact your Transport Provider – contact details are available from www.TravelEssex.co.uk.

TravelEssex has agreed common registration dates for new registrations, variations, and cancellations. At the time of publication, the next change date is

Sunday 12 April 2026

Service	Route & Operator	Summary of Changes	Start Date
1 (Colchester)	Greenstead - Shrub End <i>Arriva</i>	Revised timetable with additional school day only short journeys between Greenstead and the City Centre, which will be numbered as Service 3 to differentiate them from full journeys to Shrub End (Service 1).	12/04/26
2 (Colchester)	Horkesley Heath - Highwoods <i>Arriva</i>	Minor timetable changes. One school day journey withdrawn during morning peak. Other journeys adjusted to compensate.	12/04/26
3 (Colchester)	Colchester, Greenstead - Stanway, Sainsbury's <i>Arriva</i>	Service withdrawn. Route Number 3 will be reused for new school day only short journeys (Greenstead to City Centre) on Service 1 registration. See entry above.	12/04/26
22 (Thurrock)	Grays - Aveley <i>Ensignbus</i>	Revised timetable for all days of the week with service starting slightly later and finishing slightly earlier. 30 minutes frequency and evening journeys introduced on Sundays and bank holidays.	28/03/26
31-331-332-333	Burnham, Southminster, Heybridge - Chelmsford <i>First Essex Buses</i>	Revised timetable for Service 31 journeys. Service 333 altered to go via Oak Road Estate in Heybridge and timetable revised on all days of the week.	12/04/26

Service	Route & Operator	Summary of Changes	Start Date
38-38A	Halstead - Witham <i>Stephensons</i>	Timetable adjustment to improve reliability and introduce additional journeys on Monday to Fridays.	12/04/26
44 (Thurrock)	Grays - Lakeside via Purfleet <i>Ensignbus</i>	Revised timetable - service starting slightly later and finishing slightly earlier.	28/03/26
70-170-370	Marks Farm - Chelmsford <i>First Essex Buses</i>	School day journey departing from Great Notley at 07:33 is removed from the timetable.	12/04/26
71-371-X71-C12	Colchester - Chelmsford <i>First Essex Buses</i>	Services re-routed in Chelmsford to avoid Duke Street Railway bridge. Route number 372 will no longer be used. C12 route number introduced for journeys starting at Boreham. Revised timetable on all days with the majority of 71 journeys withdrawn.	12/04/26
73 (Thurrock)	Lakeside - Tilbury <i>Ensignbus</i>	Revised timetable - service starting slightly later and finishing slightly earlier. Increased Monday to Friday daytime frequency of every 20 minutes. Reduced frequency after approximately 22:30 on Monday to Saturdays. Route will no longer serve Calcutta Road, Dock Road, Amazon, or ASDA. Revised routing via Civic Square.	28/03/26
73-73A-73B	Maldon - Chelmsford <i>First Essex Buses</i>	Revised timetable. 73A will operate via Boreham Village and most Service 73 journeys will instead operate as 73B (also via Boreham Village).	12/04/26
75-375	Colchester - Chelmsford <i>First Essex Buses</i>	Most journeys on Monday to Fridays and Saturdays will operate as new variant Service 375 (Colchester to Chelmsford via Maldon). All journeys on Sundays and a small number on other days will continue to operate as Service 75 (Colchester to Maldon). Extra journey added at 22:50 from Colchester to Tiptree on Friday and Saturday.	12/04/26
83 (Thurrock)	Chadwell - Lakeside <i>Ensignbus</i>	Revised timetable for all days of the week with service starting slightly later and finishing slightly earlier. Reduced frequency during Monday to Friday peak.	28/03/26
87	Brightlingsea - Colchester <i>First Essex Buses</i>	Minor timetable change. School day departure at 16:40 from University of Essex removed from timetable.	12/04/26

Service	Route & Operator	Summary of Changes	Start Date
92	Manningtree – Ipswich <i>Ipswich Buses</i>	Revised departure times for evening peak trips.	12/04/26
93-93A-X93	Colchester – Ipswich <i>Ipswich Buses</i>	Revised route from Langham to Colchester North Station. Revised timetable including changes to departure times and increased running times. Removal of Suffolk One on morning journey towards Ipswich.	12/04/26
132	Saffron Walden – Cambridge <i>CG Myalls</i>	ECC contract awarded to <i>A2B Travel Group</i> . No change to route or timetable.	29/03/26
336	South Woodham Ferrers – Chelmsford <i>First Essex Buses</i>	Revised timetable.	12/04/26
339	Epping – Shenfield <i>London Vintage Bus Hire</i>	Additional operational dates for 2026 and early 2027 added to Service 339, in connection with Epping and Ongar Railway. 2026: April: 17, 18, 19. May: 2, 3, 4, 9, 10, 16, 17, 23, 24, 25, 27, 30, 31. June: 6, 7, 13, 14, 20, 21. July: 4, 5, 11, 12, 18, 19, 24, 25, 26, 29. August: 1, 2, 5, 8, 9, 12, 15, 16, 19, 22, 23, 26, 29, 30, 31. September: 5, 6, 12, 13, 25, 26, 27. 2027: March: 26, 27, 28, 29, 31. April: 3, 4, 10, 11, 17, 18.	17/04/26
625	Chelmsford, Wood Street Tesco – Southend High School for Boys <i>First Essex Buses</i>	Additional running time for afternoon journey.	12/04/26
721	Braintree Railway Station – ZERO2 Bus Museum <i>ZERO2 Buses</i>	Seasonal bus service between Braintree Railway Station and ZERO2 Bus Museum. Operates on Saturdays, Sundays, and Bank Holidays from Good Friday (03 April 2026) until Sunday 25 October 2026.	03/04/26
C3	North Melbourne – Chelmsford City Centre <i>First Essex Buses</i>	Minor timetable change for Monday-Friday morning and afternoon peak times.	12/04/26
C8	Chelmsford – Beaulieu Park Station <i>First Essex Buses</i>	Monday to Friday timetable revised during peak hours only.	12/04/26
C11	Chelmsford – Beaulieu Park Station <i>First Essex Buses</i>	Monday to Friday timetable revised during peak hours only.	12/04/26

Service	Route & Operator	Summary of Changes	Start Date
X10	Stansted Airport - Chelmsford - Basildon <i>First Essex Buses</i>	Revised timetable including a new later journey from Stansted Airport. Except for Sundays, most journeys will not serve Great Dunmow (which will be served by an increased number of X30 journeys to compensate).	12/04/26
X20 & 320	Colchester - Braintree - Stansted Airport <i>First Essex Buses</i>	Revised timetable on Monday to Fridays and Saturdays.	12/04/26
X30	Chelmsford - Stansted Airport <i>First Essex Buses</i>	Revised timetable and route simplification. Typical off-peak arrangements have one bus per hour serving Great Dunmow and Broomfield Hospital with another bus each hour omitting those locations. Southend Airport no longer served. Almost all journeys go via Southend Hospital except for some overnight journeys which take a more direct route.	12/04/26
X80 (Thurrock)	Chafford Hundred - Bluewater <i>Ensignbus</i>	Revised timetable on all days of the week. An additional minute of running time added to journeys from Greenhithe Station towards Lakeside.	28/03/26

TravelEssex website

Your one-stop-shop for all things TravelEssex.

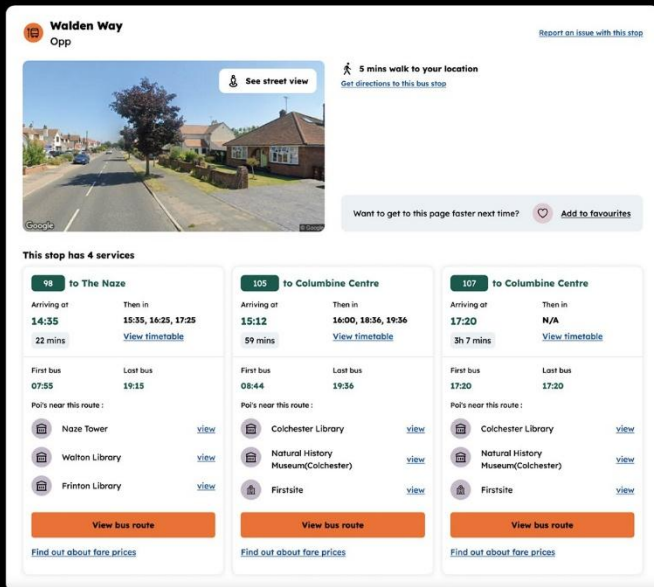
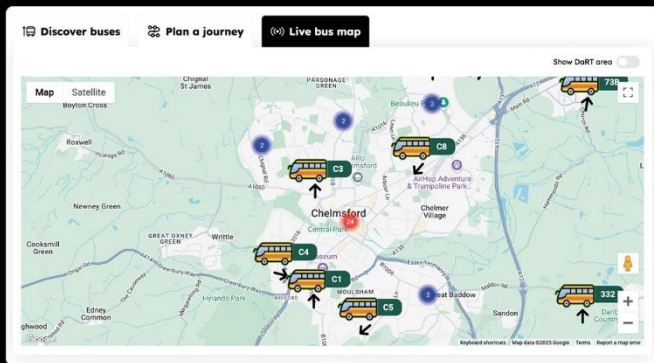


Discover buses

Plan a journey

Live bus map

www.travelessex.co.uk



Report it!



If you see a damaged bus shelter, a missing timetable, or a fault with a real time electronic display at one of our bus stops, you can report it here:

www.essexhighways.org/tell-us/other/bus-stops



Hop on board!

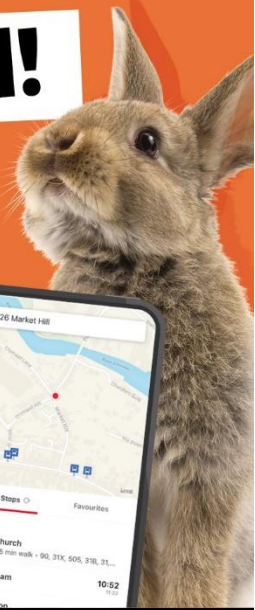
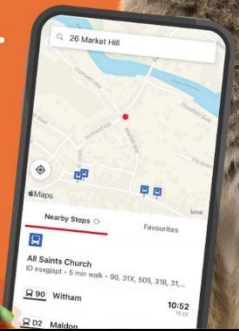
The easy way to plan your journey throughout Essex.

Download the TravelEssex app today.



GET IT ON Google Play

Download on the App Store



TravelEssex newsletter



Bus Passenger News is also available as part of our **TravelEssex newsletter**, sent to your mailbox each month.

To manage your subscription visit: pages.news.essex.gov.uk/pages/travelessex

Keeping in touch

- @TravelEssexNews
- facebook.com/TravelEssex
- instagram.com/TravelEssex

